



12ft Skiff Long Courses 2021-2022 (Club racing)

1 Northeast – 9.8nm <i>All marks to starboard</i>	2 East – 8.3nm <i>All marks to Starboard</i>	3 South East – 8.1nm <i>Mark roundings as noted</i>
Start North East vicinity of Clarke Island N Nielsen Park Yellow Buoy SY Shark Island YA Buoy C Clarke Island Flag Mark B Beashel Buoy C Clarke Island Flag Mark N Nielsen Park Yellow Buoy Finish South of Clarke Island	Start Near Kurraba Point SY Shark Island YA Bouy G Garden Island Navy Buoy SY Shark Island YA Buoy G Garden Island Navy Buoy SY Shark Island YA Buoy Finish Near Kurraba Point	Start In Athol Bay CI Clarke Island Shipping T Taylor Bay YA Buoy RB Rose Bay YA Buoy CB Chowder Bay YA Bouy SY Shark Island YA Buoy A Athol Flag Mark. CI Clarke Island Shipping Finish In Athol Bay

4 South – 9.0nm <i>Mark roundings as noted</i>	5 West – 7nm <i>Mark roundings as noted</i>
Start In Athol Bay CI Clarke Island Shipping CB Chowder Bay YA Buoy RB Rose Bay YA Buoy CB Chowder Bay YA Buoy SY Shark Island YA Buoy A Athol Flag CI Clarke Island Shipping Finish Near Kurraba Point	Start In Athol Bay K Kurraba Point Inflatable PP Point Piper YA Buoy G Garden Island Navy Buoy PP Point Piper YA Buoy K Kurraba Point Inflatable A Athol Bay K Kurraba Point Inflatable Finish In Athol Bay

Rounding Mark Description

B Beashel Buoy - Upright yellow steel cylinder near the Sow and Pigs reef C Clarke Island Flag Mark – SFS Orange flag mark, north east of Clarke Island C Clarke Island Inflatable - Inflatable Yellow Cylindrical Bouy north east of Clark Island. N Nielson Park Yellow Buoy - A large yellow can buoy north west of Nielson park beach SY Shark Island YA Buoy - Upright yellow steel cylinder south eastern end of Shark Island K Kurraba Point – Inflatable Yellow Cylindrical Bouy south of Kurraba Point M Mosman Bay Flag Mark – SFS Orange flag mark, near Mosman Bay	T Taylor Bay YA Buoy - Upright yellow steel cylinder in Taylor Bay A Athol Flag Mark – SFS Orange flag mark, in Athol Bay CI Clarke Island Shipping - White Ship Bouy, North of Clarke Island. PY Point Piper Inflatable - Inflatable Yellow Cylindrical Bouy, between Point Piper and Sharke Island. CB Chowder Bay YA Buoy - Upright yellow steel cylinder in Chowder Bay RB Rose Bay YA Mark – Upright yellow steel cylinder in Rose Bay R Rose Bay Convent Mark - Red Can in Rose Bay, underneath the Convent on the hill G Garden Island Navy Buoy – White Navy Bouy East of Garden island (The most westerly of the 2 Navy Buoy)
---	---



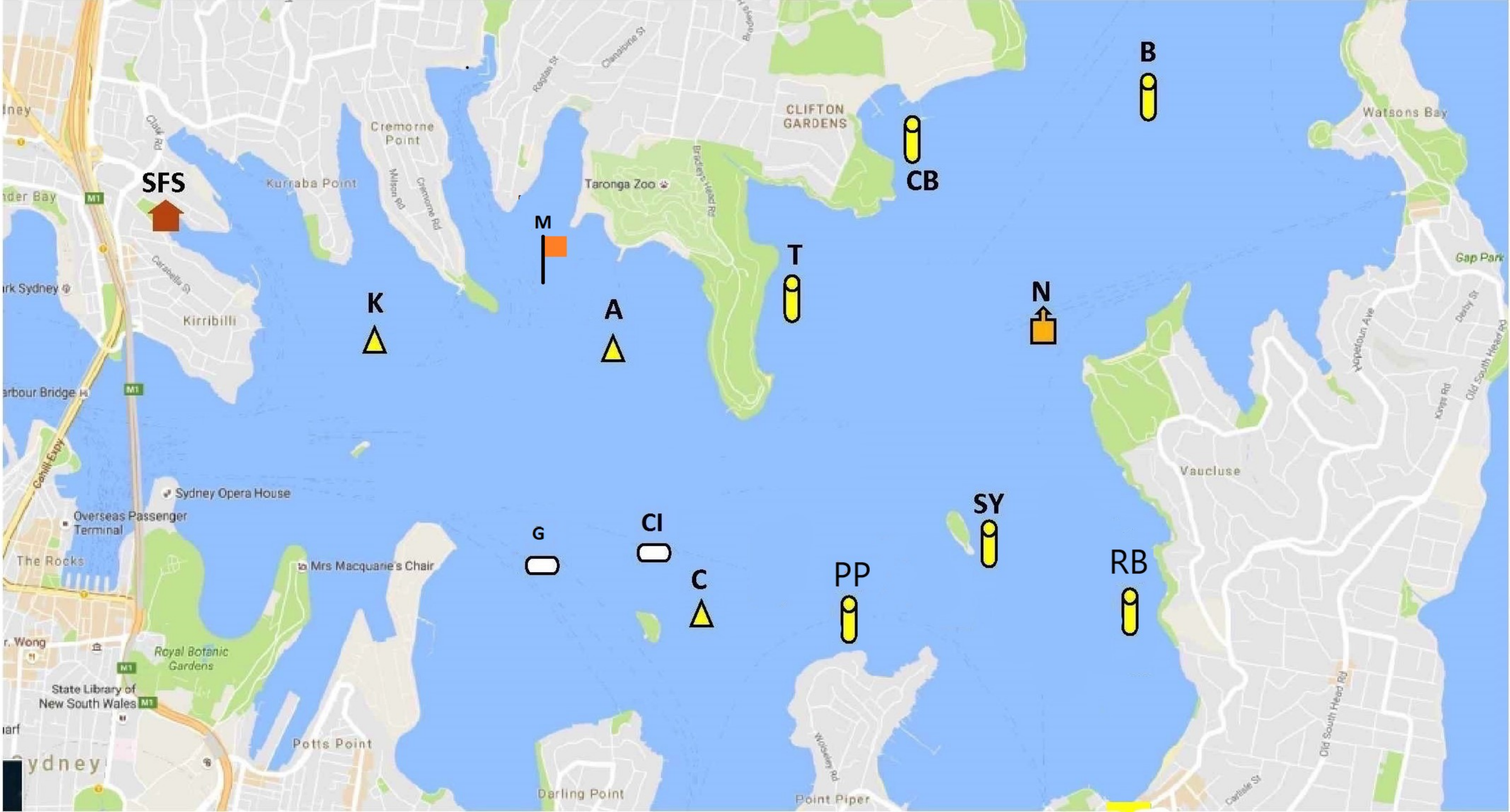
12ft Skiff Short Courses 2021-2022 (Club racing)

1	Northeast – 5.7nm <i>All marks to starboard</i>	2	East – 4.2nm <i>All marks to Starboard</i>	3	South East – 4.8nm <i>Mark roundings as noted</i>	
Start	North East vicinity of Clarke Island N Nielsen Park Yellow Buoy C Clarke Island Flag Mark N Nielsen Park Yellow Buoy	Start	Near Cremorne Point SY Shark Island YA Bouy CI Clarke Island Shipping SY Shark Island YA Bouy	Start	In Athol Bay CI Clarke Island Shipping T Taylor Bay YA Bouy SY Shark Island YA Bouy A Athol Flag Mark. CI Clarke Island Shipping	P S S P P
Finish	Vacinity of Clarke Island	Finish	Near Cremorne Point	Finish	In Athol Bay	

4	South – 5.3nm <i>All marks to Port</i>	5	West – 3.5nm <i>All marks to port</i>
Start	In Mosman Bay CI Clarke Island Shipping M Mosman Bay Flag Mark CI Clarke Island Shipping M Mosman Bay Flag Mark CI Clarke Island Shipping	Start	In Athol Bay K Kurraba Point Inflatable A Athol Flag Mark. K Kurraba Point Inflatable A Athol Flag Mark. K Kurraba Point Inflatable
Finish	In Mosman Bay	Finish	In Athol Bay

Rounding Mark Description

<p>B Beasel Buoy - Upright yellow steel cylinder near the Sow and Pigs reef</p> <p>C Clarke Island Flag Mark – SFS Orange flag mark, north east of Clarke Island</p> <p>C Clarke Island Inflatable - Inflatable Yellow Cylindrical Bouy north east of Clark Island.</p> <p>N Nielson Park Yellow Buoy - A large yellow can buoy north west of Nielson park beach</p> <p>SY Shark Island YA Buoy - Upright yellow steel cylinder south eastern end of Shark Island</p> <p>K Kurraba Point – Inflatable Yellow Cylindrical Bouy south of Kurraba Point</p> <p>M Mosman Bay Flag Mark – SFS Orange flag mark, near Mosman Bay</p>	<p>T Taylor Bay YA Buoy - Upright yellow steel cylinder in Taylor Bay</p> <p>A Athol Flag Mark – SFS Orange flag mark, in Athol Bay</p> <p>CI Clarke Island Shipping - White Ship Bouy, North of Clarke Island.</p> <p>PY Point Piper Inflatable - Inflatable Yellow Cylindrical Bouy, between Point Piper and Sharke Island.</p> <p>CB Chowder Bay YA Buoy - Upright yellow steel cylinder in Chowder Bay</p> <p>RB Rose Bay YA Mark – Upright yellow steel cylinder in Rose Bay</p> <p>R Rose Bay Convent Mark - Red Can in Rose Bay, underneath the Convent on the hill</p> <p>G Garden Island Navy Bouy – White Navy Bouy East of Garden island (The most westerly of the 2 Navy Bouys)</p>
---	---



SFS



K



M



A



T



N



B



CB



SY



RB



G



CI



C



PP

