






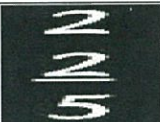





SFS HISTORIC 18 FOOTERS – 28th JANUARY 2012

Australian Championships – Heat 3 – ‘Galloping Ghost Trophy

Skiff	Insignia	Original	Replica Built	Handicap* *minute advantage start before Scratch skiff	Seasons Pointscore* *highest numbered skiff is leading pointscore	Summer Pointscore
Aberdare		1932	2000	6	1	0
		CREW NEEDED!!!!				
Alruth Skipper – Jeremy Sharp		1947	2001	2	50	30
Australia Skipper –Chris Haskard		1947	2000	5	27	5
Australia IV Skipper – John Winning		1943	2007	Scratch	44	24
Britannia Skipper –Ian Smith		1919	2002	12	47	28
Scot Skipper – Ian Pretty		1906	1995	8	38	18
Tangalooma Skipper –Peter Legrove		1930	1994	8	46	28
The Mistake Skipper – Brian Zemanek				1	21	2
Top Weight Skipper – John Tierney	1	1946	2001	13	1	1
Yendys		1924	2007	2	13	13
		CREW NEEDED!!!!				

www.sydneyleftingsquadron.com.au

SFS Tel. No. 9955 8350

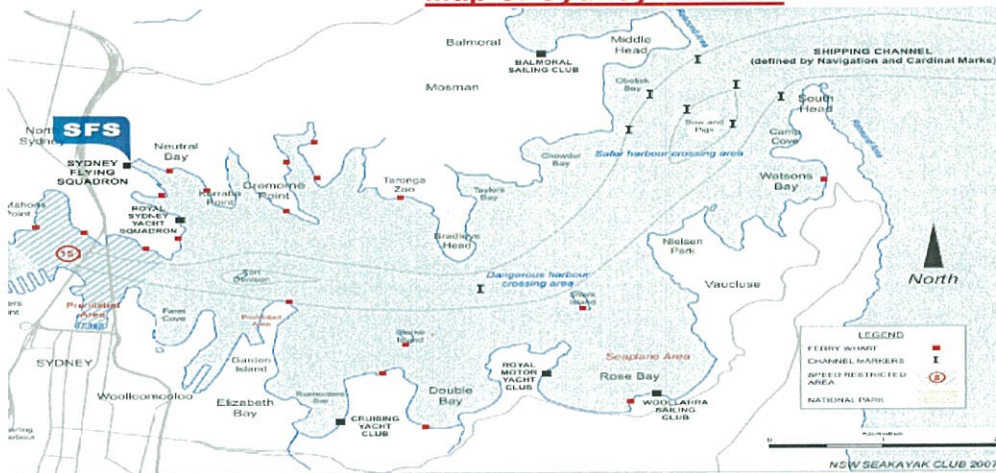
WOULD YOU LIKE TO SAIL

OUR SKIFFS NEED CREW PLEASE REGISTER YOUR INTEREST WITH THE FERRY COMMENTATOR\



These fabulous SFS ladies competed in yesterday's 2nd Heat of the Australian Championships, along with our Rescue Wonder Woman Barley Stewart.

Map of Sydney Harbour



**PLEASE
NOTE
THESE
COURSES
CAN BE
SUBJECT
TO
CHANGE**

PLEASE NOTE EACH SATURDAY THE STARTER BOAT RAISES AN APPROPRIATE FLAG WITH A NUMBER INDICATING WHICH OF THE BELOW COURSES WILL BE SAILED, ACCORDING TO WIND DIRECTION.

1 – North & North East
Start, Beashel Buoy, Shark Island, Clark Island, Chowder Bay Mark, Shark Island, Finish

2 – East
Start, Shark Island, Kurraba, Clark Island, Shark Island, Finish

3- South East
Start, Clark Island, Taylors Bay, Shark Island, Kurraba, Clark Island, Finish

4 – South
Start, Clark Island, Chowder Bay, Shark Island, Kurraba, Clark Island, Finish

5 – South West, West, North West
Start, Kurraba, Point Piper, Kurraba, Clark Island, Finish

**MANY THANKS TO
BOB CHAPMAN
AND
PETER NOTLEY
FOR THE SAILING
REPORT AND
HANDICAP
INFORMATION**